

2022 Kansas Voters Key Findings



87% of Kansas Voters Say Candidate's Health Care Position Important to Voting Decision



SUPERMAJORITIES FROM ALL PARTIES AGREE

- 97% of Democrat Voters
- 82% of Republican Voters
- 84% of Independent Voters

Majorities of Kansas Voters SUPPORT Expansion of KanCare



62% of Suburban Voters

78% of Urban Voters

72% of Rural Voters

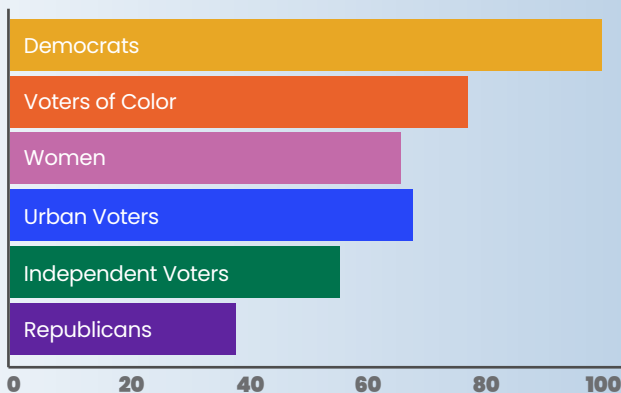


MAJORITIES FROM ALL PARTIES AGREE

- 98% of Democrat Voters
- 56% of Republican Voters
- 64% of Independent Voters

Nearly 57% of Kansas Voters MORE LIKELY TO VOTE FOR Pro-KanCare Expansion Candidates

MORE LIKELY



81% of Kansas Voters AGREE All Residents Should Have Access to Affordable Health Care

Should Have Access to Affordable Health Care



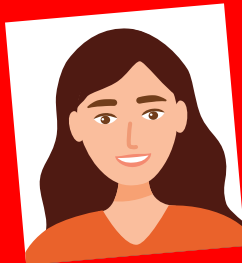
SUPERMAJORITIES FROM ALL PARTIES AGREE

- 98% of Democrat Voters
- 72% of Republican Voters
- 79% of Independent Voters



72% of KANSAS Voters Say Affordable Health Insurance Should Be A VERY HIGH or HIGH PRIORITY for Elected Officials

HEALTH ID CARD



Majorities of Voters Agree

93% of Democrats
71% of Independents
59% of Republicans

7 in 10 Feel Having Health Care Professionals Accessible Where They Live Should Be HIGH or VERY HIGH PRIORITY

Professionals Accessible Where They Live Should Be HIGH or VERY HIGH PRIORITY

49% Say Access to Care is a Problem where They Live

62% of Kansas Voters or Family Members HAVE MEDICAL DEBT

74% of Low-income Voters or a Family Member Have Medical Debt



MEDICAL DEBT AFFECTS VOTERS ACROSS POLITICAL PARTIES

Currently Have Medical Debt or Had Debt in Past
66% of Biden Voters 61% of Trump Voters

TWO MOST IMPORTANT Health Care Issues for Kansas Voters

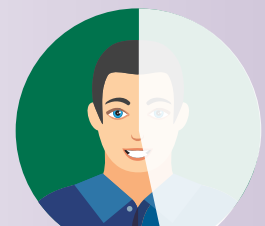
- 1 Lower co-pays and deductibles
- 2 Expanding access to health coverage for all



One-Third of Kansas Voters Worried They or Loved One Will Lose Health Insurance IN NEXT YEAR



50% of Voters of Color



47% of Low-Income / Working Class Voters